



FACT SHEET

FOR MORE INFORMATION KINDLY CONTACT:

- ALEJANDRO PÉREZ -
aperez@karismahotels.com

1-866-KARISMA (1-866-527-4762)
www.karismahotels.com



RESORT HIGHLIGHTS:

574 SUITES | 5 POOLS | 10 RESTAURANTS | 11 BARS | 1 SPA | MEETING ROOMS - 8,000 sq. ft | ➔ 84 KM / 52.19 MILES FROM AIRPORT



EL DORADO SEASIDE SUITES

Two distinct experiences in beachside luxury, all within one award-winning resort - this is the AAA Four Diamond El Dorado Seaside Suites. This stunning, adults-only paradise located on Kantenah Bay is divided into two distinct sections, Palms and Infinity, each offering a unique experience in Mexican hospitality.

Escape to pure tranquility at the Palms, El Dorado Seaside Suites' original section. The Palms features intimate accommodations, authentic Mexican architecture, lush vegetation, and serene coconut plantations.

Or choose to spend your stay in the excitement of Infinity, the resort's latest addition, and the center of activity. This all-oceanfront, brand new building features swim-up suites connecting to the main pool and balcony pools on every single floor.

GOURMET INCLUSIVE® MEETINGS

Complimentary meeting space • Luxurious accommodations • All Gourmet Meals & Gourmet Bites • Alcoholic & non-alcoholic beverages from a selection of domestic & international premium brands • World-class service: full-service concierge, beach & pool butlers & 24-hour room service • Minibar with beer, water and soft drinks (refilled once a day) • Daytime & nightly activity program • Live music & shows • Non-motorized water sports • Free Wi-Fi • Free • International calls to cell phones & landlines • Taxes & gratuities included.

SUITES

El Dorado Seaside Suites is divided into two equally stunning sections - Palms and Infinity. Surround yourself with lush vegetation, coconut plantations, and authentic Mexican architecture in the intimately sized Palms, the resort's original section overlooking the ocean and gardens. Those looking for excitement will fall in love with the all-new, all-oceanfront Infinity section, featuring striking modern décor, breathtaking ocean views, and either a swim-up terrace or infinity pool balcony. With 24-hour room service, you may never actually need to leave your suite, but when you do, you'll find shaded, King-size Bali beds waiting for you on the beach, tended to by our attentive beach waiters.

ROOM CATEGORIES:

- OCEAN FRONT SWIM UP SUITE - *Infinity Section*
- OCEAN FRONT POOL SWIM UP SUITE - *Infinity Section*
- OCEAN FRONT HONEYMOON SUITE - *Infinity Section*
- LUXURY SUITE - *Palms Section*
- BEACHFRONT SUITE - *Palms Section*
- SWIMUP JR SUITE - *Palms Section*
- PREMIUM JR SUITE - *Palms Section*

NÁAY SPA

The entire Náay Spa is built on the balance of the elements according to the Mayan principles of Fire, Earth, Water and Wind. These four elements when properly aligned lead to a spiritual and cosmic experience that melt away stress and prepare the body for true inner peace. Your personalized journey can be filled with traditional Mayan treatments, aromas, textures, flavors, and ancient healing therapies.

ACTIVITIES

Bingo, Bocce Ball, Black Jack, Coconut Painting, Darts Tournament, Fitness Center, Horseshoe, Latin Dance Lessons, NFL Shots, Soccer, Spanish Lessons, Tennis Court, Tequila Tasting, Towel Figures, Volleyball, Water Aerobics, Water Polo, Yoga Classes and Mezcal Tasting

DINING EXPERIENCE

Savor every moment of the Karisma Gourmet Inclusive® Experience in any of El Dorado Seaside Suite's 10 elegant à la carte restaurants*. Every meal is a demonstration of our chefs' mastery of the culinary arts.

Restaurants operate on select schedules.

*Restrictions may apply.

GOURMET INCLUSIVE® RESTAURANTS & BARS:

- SEASIDE MARKET - *World Cuisine*
- MIA CASA - *Contemporary Italian Cuisine*
- KLAY TALAY - *Wok Cuisine*
- ARRECIFES - *International Cuisine*
- CULINARIUM - *Latin Fusion Cuisine*
- LA CARRETA - *Authentic Mexican Cuisine*
- GOURMET PUB - *World Cuisine to share*
- DRIFTWOOD GOURMET OCEANFRONT BBQ CORNER - *International Cuisine*
- LA SANDWICHERIE - *International Gourmet Snacks*
- BEACH BARBECUE - *Grilled Cuisine*
- MEZCALITO - LOBBY BAR
- KANALOA BAR
- GUACAMAYAS BAR
- COTORROS BAR
- LA CANTINA TEQUILA BAR
- MARGARITAS BAR
- OCEANFRONT SWIM UP BAR - main pool
- COLIBRI SWIM-UP BAR
- GAVIOTAS SWIM-UP BAR
- ARRECIFES SWIM-UP BAR
- GARCITAS SWIM-UP BAR



KARISMA
 GOURMET
 INCLUSIVE®
 EXPERIENCE



CORPORATE EVENTS

With so many different venues, and experts skilled at planning events of all kinds, Karisma Hotels & Resorts can create engaging, immersive and truly memorable experiences that will impress even the most demanding corporate titans, from start to finish.

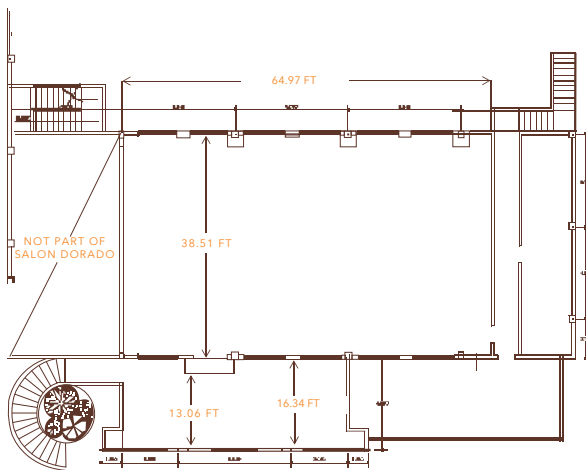
SOCIAL GREWPS (Gatherings • Reunions • Events • Work • Play • Social)

Whether it's a group gathering, a yearly family reunion, wedding or friends' getaway, we're adept at accommodating groups of any size for any occasion. Our staff will happily coordinate dinner arrangements, culinary events, group activities, fishing and golf tournaments, tours of cultural and historic sites, and pretty much anything else you can dream up.

EL DORADO SEASIDE SUITES & SENSIMAR SEASIDE SUITES - CAPACITY CHART													
	FEET			METERS									
	Length	Width	Height	Length	Width	Height	CLASSROOM	THEATRE	CONFERENCE	HOLLOW SQUARE	U-SHAPE	COCKTAIL	BANQUET
BALLROOMS													
COBA BALLROOM	33.79	31.27	11.15	10.30	9.53	3.40	20	40	30	40	22	40	50
DORADO BALLROOM	61.02	39.24	11.38	18.60	11.96	3.47	60	80	40	50	40	100	80
SEASIDE BALLROOM	106.17	46.52	17.06	32.36	14.18	5.20	150	300	50	60	60	300	250
OUTDOOR VENUES													
SEASIDE PIER	119.42	14.76	9.19	36.40	4.50	2.8	NA	40	24	NA	NA	80	60
KANTENAH PALAPA	63.65	37.47	11.38	19.40	11.42	3.5	NA	100	40	50	50	120	100
SEASIDE BEACH	NA	NA	NA	NA	NA	NA	NA	80	30	40	37	100	100
WHITE GAZEBO	NA	NA	NA	NA	NA	NA	NA	60	24	NA	22	80	60
SKY TERRACE	NA	NA	NA	NA	NA	NA	NA	80	NA	NA	NA	150	NA
RESTAURANTS													
CULINARIUM	NA	NA	NA	NA	NA	NA	NA	NA	26	20	20	30	30
GOURMET PUB	NA	NA	NA	NA	NA	NA	NA	NA	NA	NA	NA	NA	60
SEASIDE MARKET	NA	NA	NA	NA	NA	NA	NA	NA	NA	NA	NA	NA	150
SEASIDE MARKET TERRACE	N/A											90	74
SOLARIUM	N/A											91	56
DRIFTWOOD	N/A											N/A	120
KANALOAS MARKET	N/A											70	N/A

*The above are based in our Maximum capacity per Event space and can vary based on event needs and/or set ups.

DORADO BALLROOM



SEASIDE BALLROOM

